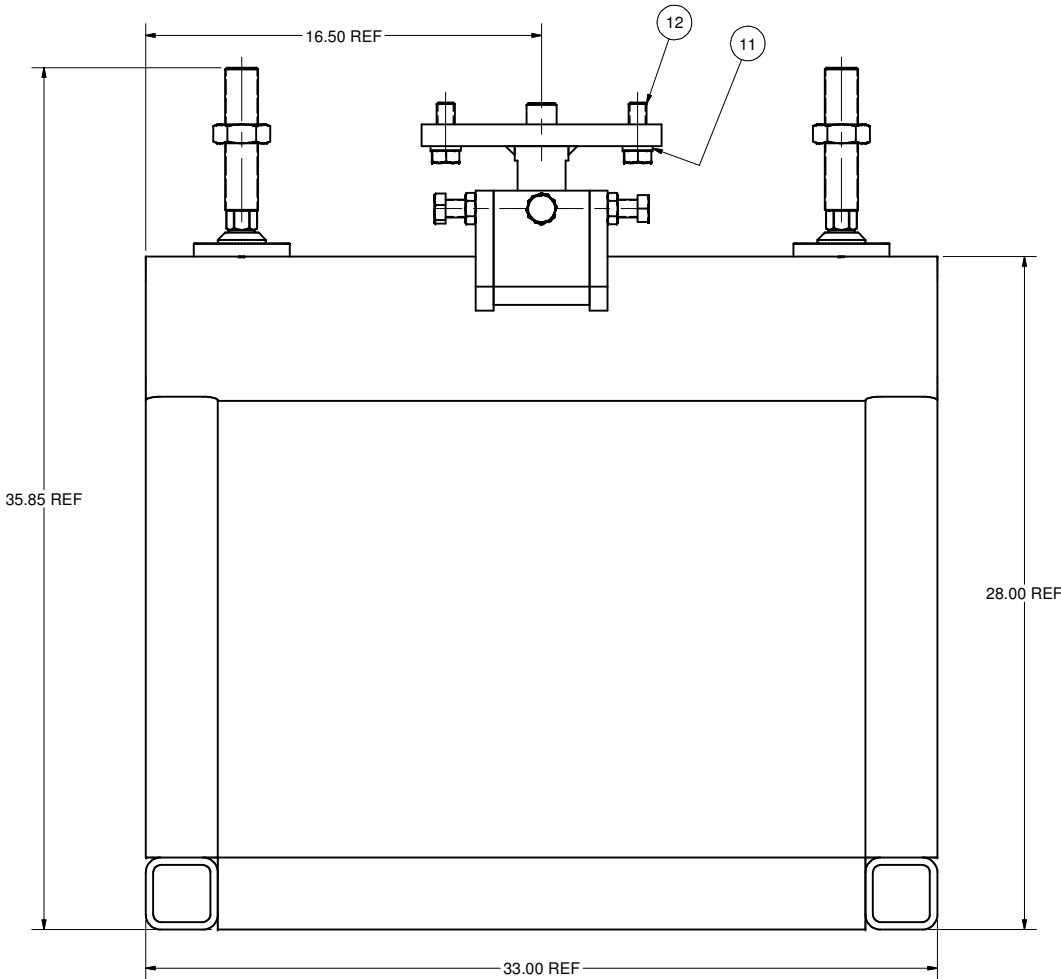
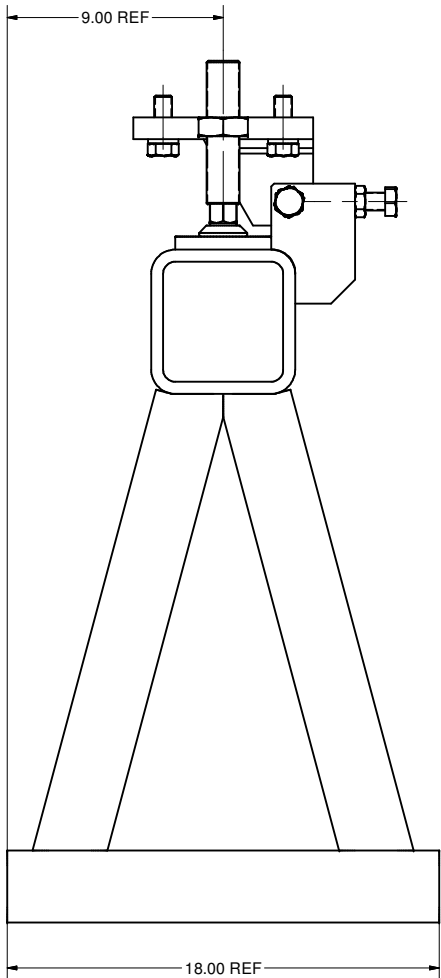
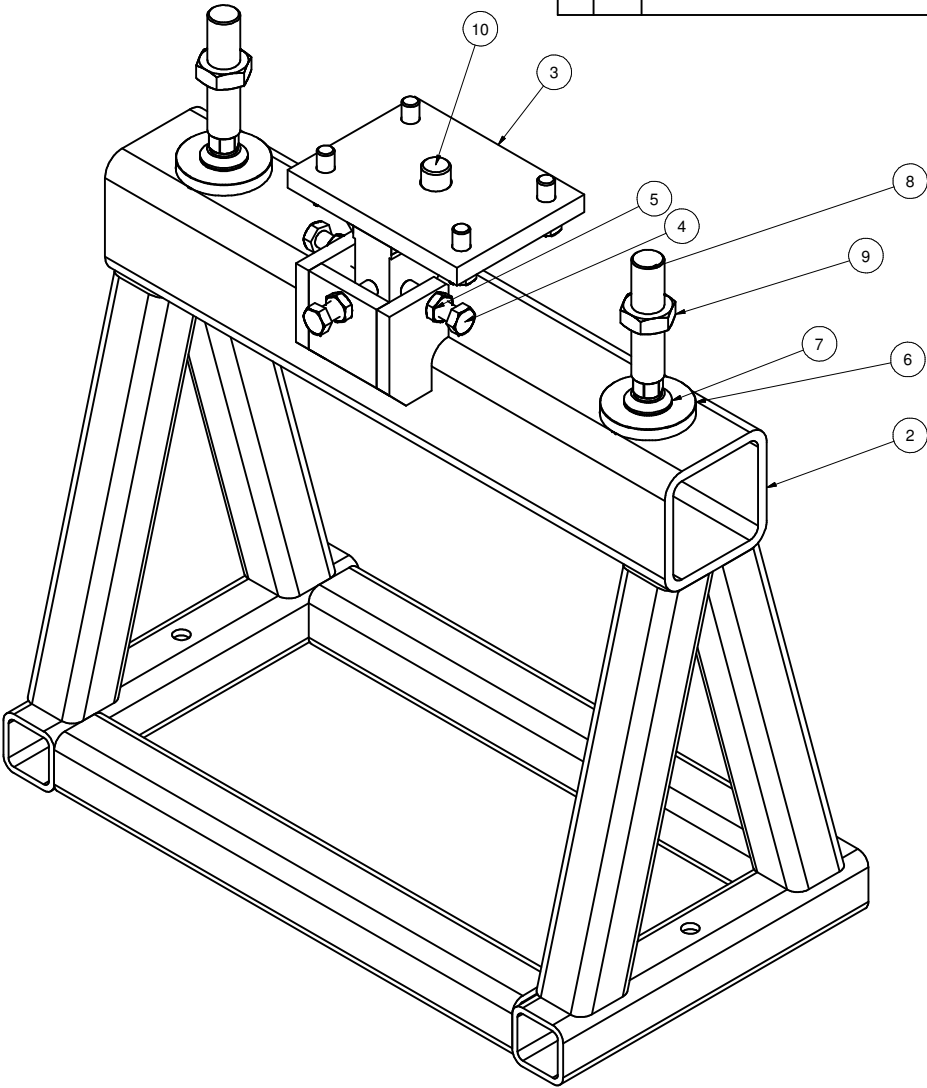
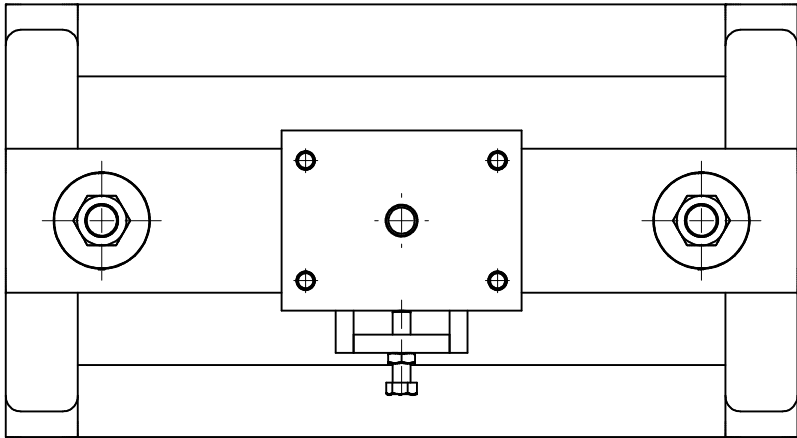


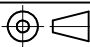



REVISIONS				
SYM.	ZONE	DESCRIPTION	DATE	APP.
A		CHANGED NAME OF PART 4 IN PL	4/30/07	JS



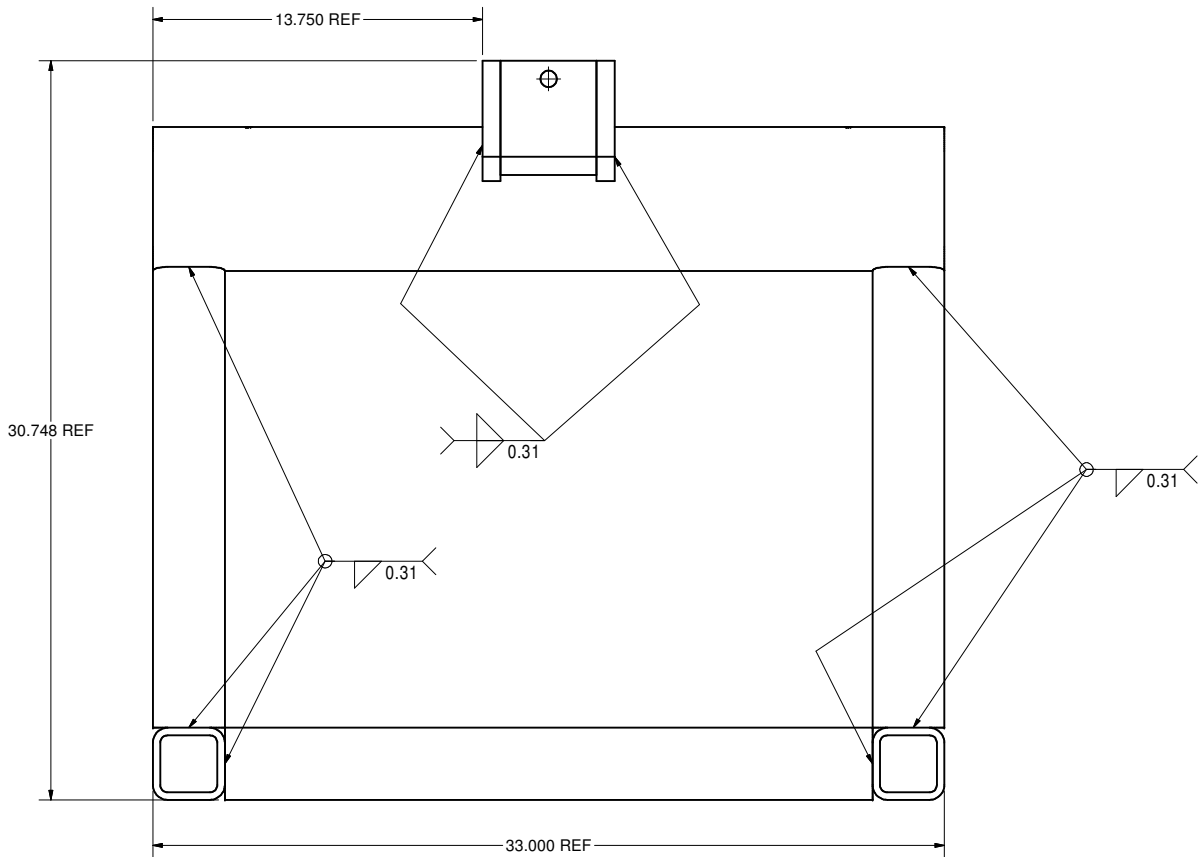
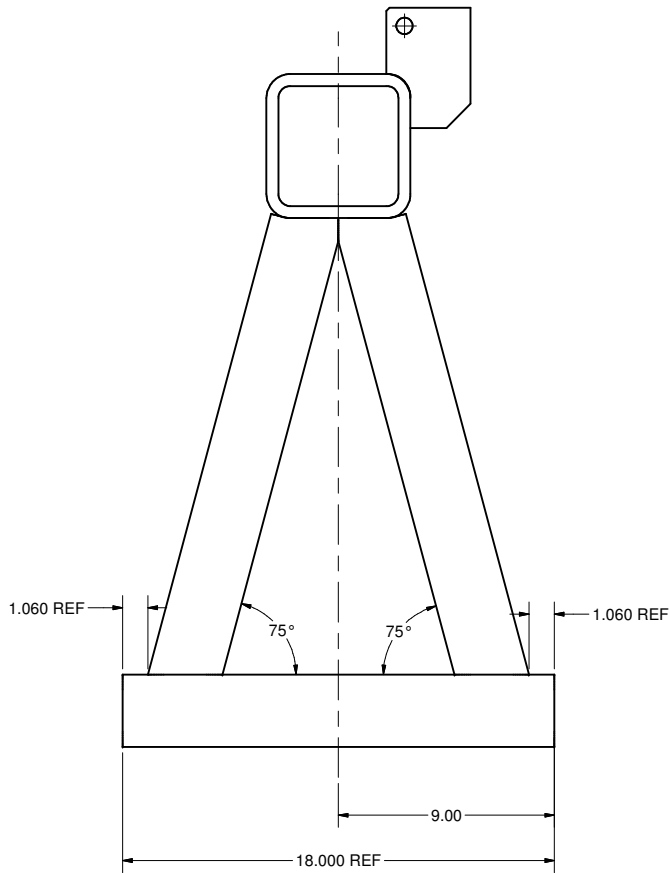
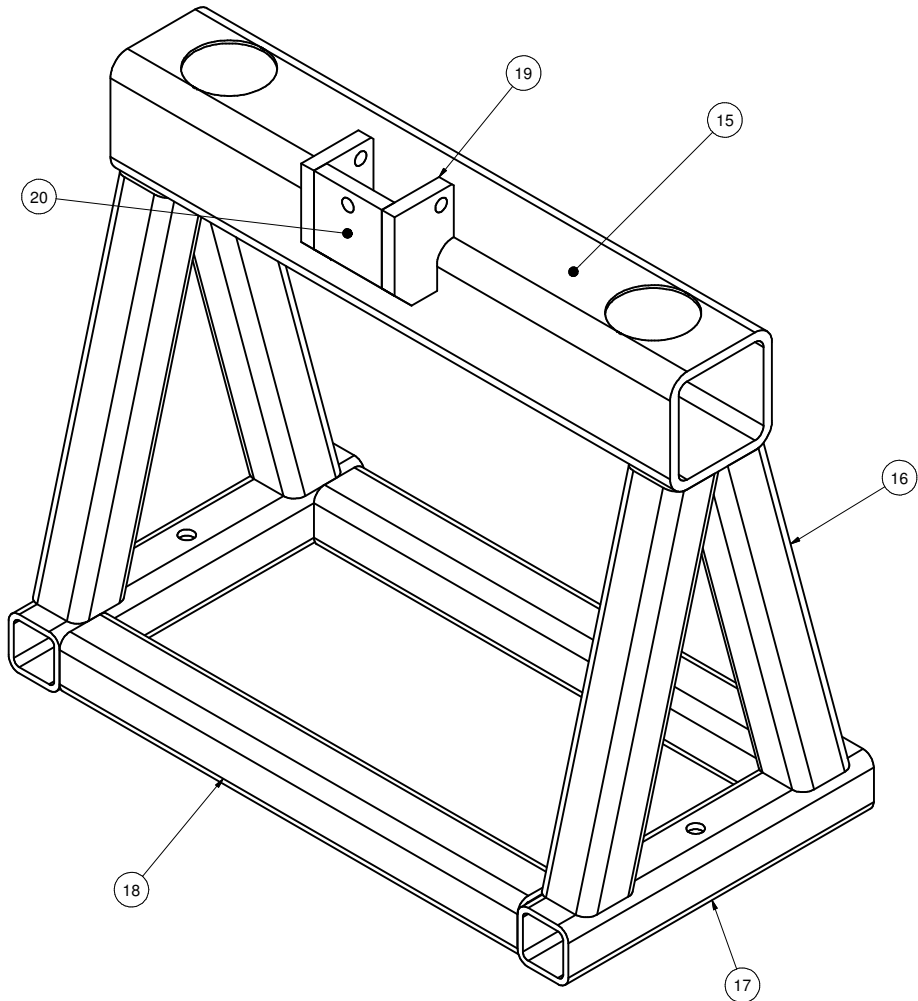
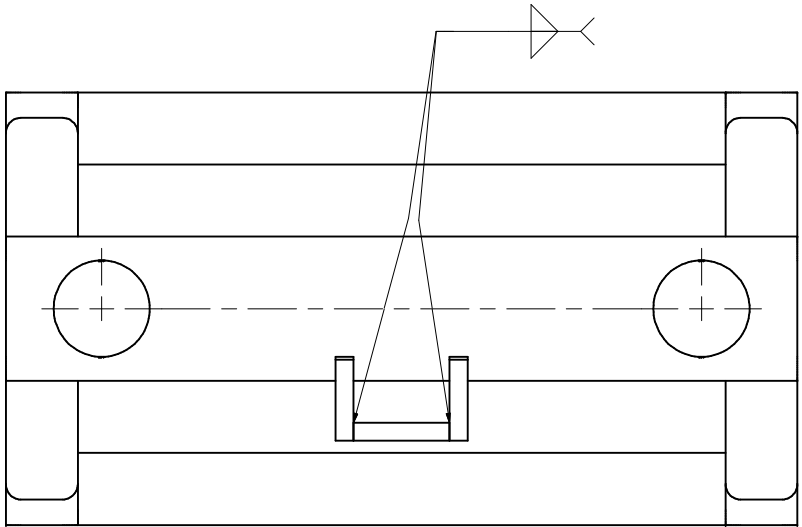
- 1 **VACUUM VESSEL SUPPORT ASSEMBLY**
FILE NAME: 7110-010
SHEET NO.: 1
DFT. SCALE: 1 : 4
MATERIAL:
QTY: 1
NOTES: 1. INSTALL SUPPORT PLATE (ITEM 3)
ON VACUUM VESSEL 7110-003

FOR MACHINING LUBRICANT USE ONLY
ALKALINE DETERGENT LUBRICANT CIMSTAR 40
OR EQUIVALENT APPROVED BY CORNELL LEPP

25	7110-010 (SH 7)	CART ASSEMBLY	1					
12	PUR.	3/4-10 x 2 HEX HEAD SCREW	4					
11	PUR.	3/4 Spring Lock Washer	4					
10	7110-010 (SH 6)	PIN TOP PLATE	1					
9	PUR.	3/8-12 Hex Jam Nut	2					
8	7110-010 (SH 6)	VERTICAL SCREW	2					
7	7110-010 (SH 6)	PAD	2					
6	7110-010 (SH 6)	TABLE PAD	2					
5	PUR.	3/4-16 UNF Hex Jam Nut	3					
4	7110-010 (SH 6)	3/4-16 PUSH SCREW	3					
3	7110-010 (SH 4)	SUPPORT PLATE SUB-ASSY	1					
2	7110-010 (SH 2)	SUPPORT FRAME	1					
1	7110-010 (SH 1)	VACUUM VESSEL SUPPORT ASSEMBLY	X					

		ITEM		DWG. NO.		DESCRIPTION			G1		G2		G3		REMARKS		REV.		
									QUANTITY										
		PRINT DISTR.		PLOT DATE: 4/30/2007 CAD FILE NAME: 7110-010.idw															
7110-010 SH. NO. 1 OF 9		CR1		UNLESS OTHERWISE SPECIFIED: DIMENSIONS ARE IN INCHES: TOLERANCES ON: .00 ± .010 .000 ± .005 FRACTIONS ± 1/64 ANGLES ± 0.5° ALL SURFACES 			 CORNELL UNIVERSITY Floyd R. Newman Laboratory Ithaca, NY 14853 ERL Horizontal Test Cryomodule Vacuum Vessel Support VACUUM VESSEL SUPPORT ASSEMBLY DETAIL												
REV. A		CHECKED BY: VM		DRAWN BY applin			DRAWN FOR VM			DATE 8/28/2006			SCALE D		7110-010 SH. NO. 1 OF 9			REV. A	
		APPROVED BY: VM																	

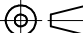





REVISIONS			
SYM.	ZONE	DESCRIPTION	DATE APP.



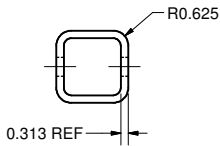
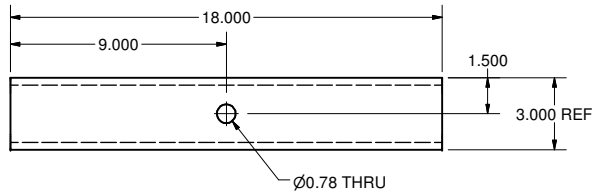
2 SUPPORT FRAME
FILE NAME: 7110-010
SHEET NO.: 2
DFT. SCALE: 1 / 4
MATERIAL:
QTY: 2
NOTES: WELDS CONFORM TO SPEC.

FOR MACHINING LUBRICANT USE ONLY
ALKALINE DETERGENT LUBRICANT CIMSTAR 40
OR EQUIVALENT APPROVED BY CORNELL LEPP

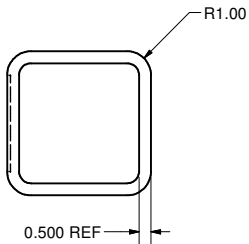
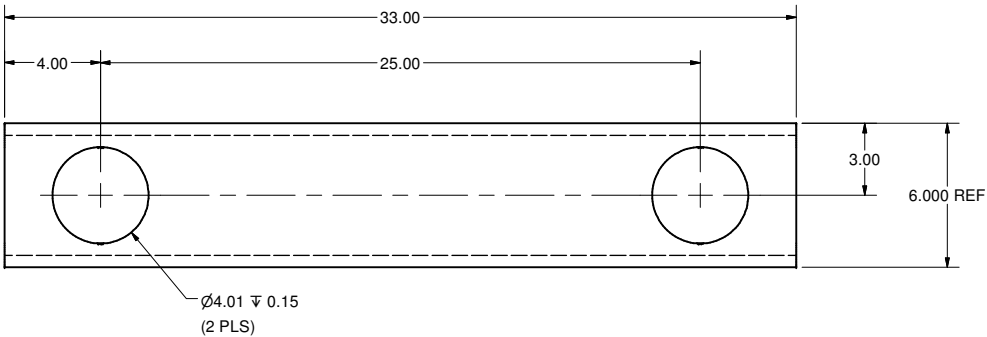
20	7110-010 (SH 4)	PLATE 2	1					
19	7110-010 (SH 4)	PLATE 1	2					
18	7110-010 (SH 3)	3" SQ. TUBE 2	2					
17	7110-010 (SH 3)	3" SQ. TUBE	2					
16	7110-010 (SH 3)	3" SQ. TUBE 3	4					
15	7110-010 (SH 3)	6" SQ. TUBE	1					
2	7110-010 (SH 2)	SUPPORT FRAME	X					

	ITEM	DWG. NO.	DESCRIPTION			G1	G2	G3	REMARKS	REV.
							QUANTITY			
	PRINT DISTR.	PLOT DATE: 4/30/2007 CAD FILE NAME: 7110-010.idw								
	7110-010 SH. NO. 2 OF 9	CR1	UNLESS OTHERWISE SPECIFIED: DIMENSIONS ARE IN INCHES; TOLERANCES ON: .00 ± .010 .000 ± .005 FRACTIONS ± 1/64 ANGLES ± 0.5° ALL SURFACES 		<div><div>CORNELL UNIVERSITY Floyd R. Newman Laboratory Ithaca, NY 14853</div></div> <div>LABORATORY FOR ELEMENTARY-PARTICLE PHYSICS</div> <div>ERL Horizontal Test Cryomodule Vacuum Vessel Support VACUUM VESSEL SUPPORT FRAME DETAIL</div>					
CHECKED BY: VM		DRAWN BY applin	DRAWN FOR VM	DATE 8/28/2006	SCALE		7110-010 SH. NO. 2 OF 9	REV.		
APPROVED BY: VM										

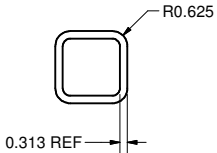
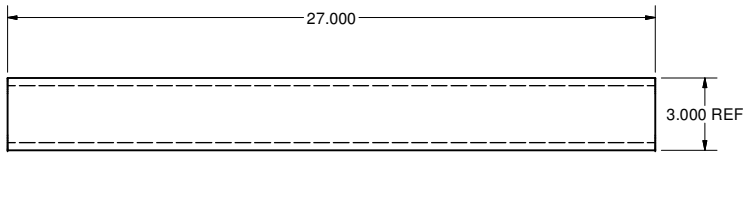
REVISIONS			
SYM.	ZONE	DESCRIPTION	DATE APP.



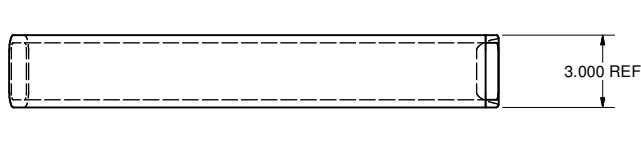
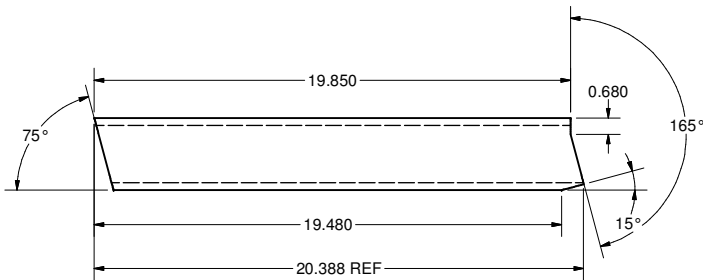
17 3" SQ. TUBE
FILE NAME: 7110-010
SHEET NO.: 3
DFT. SCALE: 1 : 4
MATERIAL: 3 x 3 x 0.313 W A500 STEEL (OR EQUIV) SQ. TUBE
QTY: 2 PER ASSEMBLY
NOTES:



15 6" SQ. TUBE
FILE NAME: 7110-010
SHEET NO.: 3
DFT. SCALE: 1 : 4
MATERIAL: 6 x 6 x 0.5 W A500 STEEL (OR EQUIV) SQ. TUBE
QTY: 1 PER ASSEMBLY
NOTES:

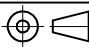




18 3" SQ. TUBE 2
FILE NAME: 7110-010
SHEET NO.: 3
DFT. SCALE: 1 : 4
MATERIAL: 3 x 3 x 0.313 W A500 STEEL (OR EQUIV) SQ. TUBE
QTY: 2
NOTES:

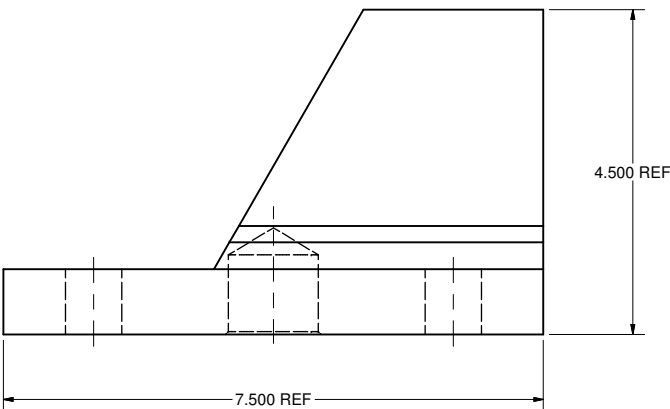
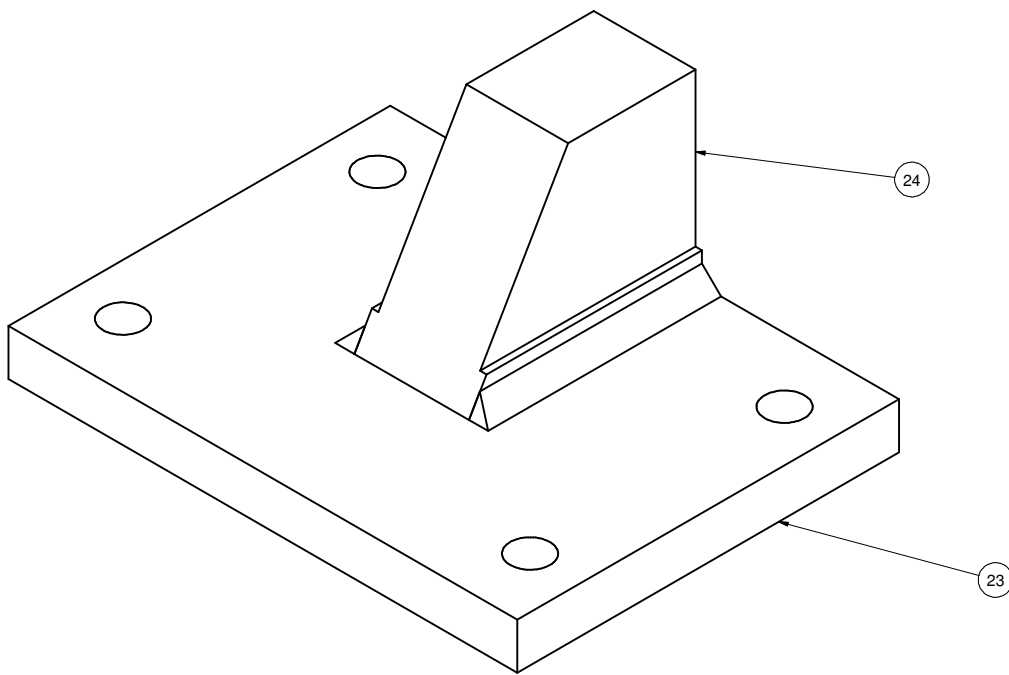
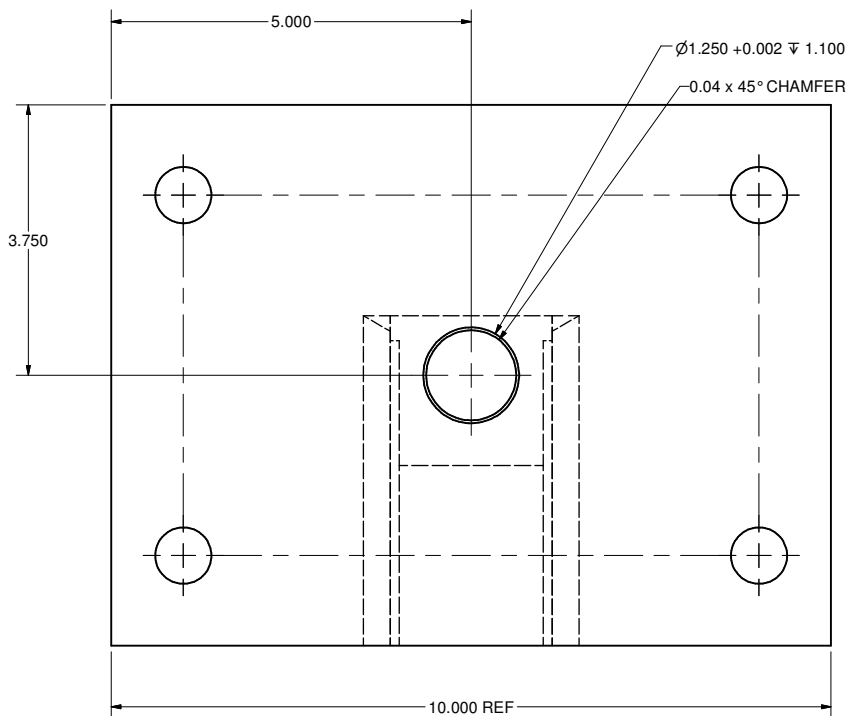
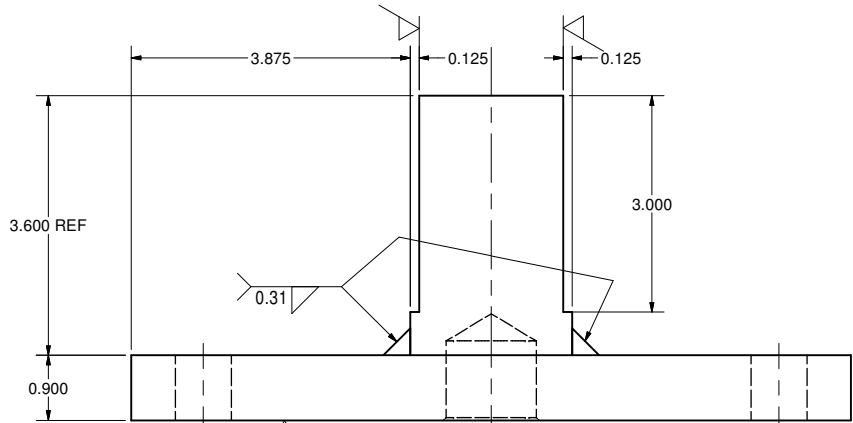
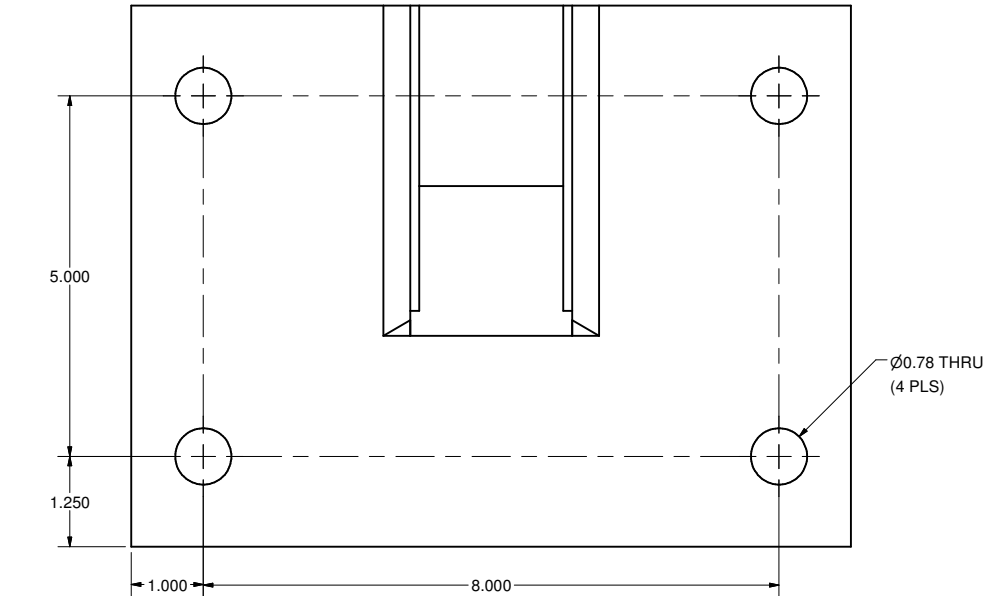


16 3" SQ. TUBE 3
FILE NAME: 7110-010
SHEET NO.: 3
DFT. SCALE: 1 : 4
MATERIAL: 3 x 3 x 0.313 W A500 STEEL (OR EQUIV) SQ. TUBE
QTY: 4 PER ASSEMBLY
NOTES:

FOR MACHINING LUBRICANT USE ONLY
ALKALINE DETERGENT LUBRICANT CIMSTAR 40
OR EQUIVALENT APPROVED BY CORNELL LEPP

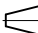



		ITEM		DWG. NO.		DESCRIPTION			G1		G2		G3		REMARKS		REV.					
		PLOT DATE: 4/30/2007																				
		CAD FILE NAME: 7110-010.idw																				
7110-010 SH. NO. 3 OF 9		CR1		UNLESS OTHERWISE SPECIFIED: DIMENSIONS ARE IN INCHES: TOLERANCES ON: .00 ± .010 .000 ± .005 FRACTIONS ± 1/64 ANGLES ± 0.5° ALL SURFACES ✓		<div><div></div><div>CORNELL UNIVERSITY Floyd R. Newman Laboratory Ithaca, NY 14853</div></div> <div>ERL Horizontal Test Cryomodule Vacuum Vessel Support SUPPORT FRAME TUBE DETAILS</div>												7110-010			REV.	
						CHECKED BY: VM		DRAWN BY applin		DRAWN FOR VM		DATE 8/28/2006		SCALE D		SH. NO. 3 OF 9		REV.				
REV.				APPROVED BY: VM																		

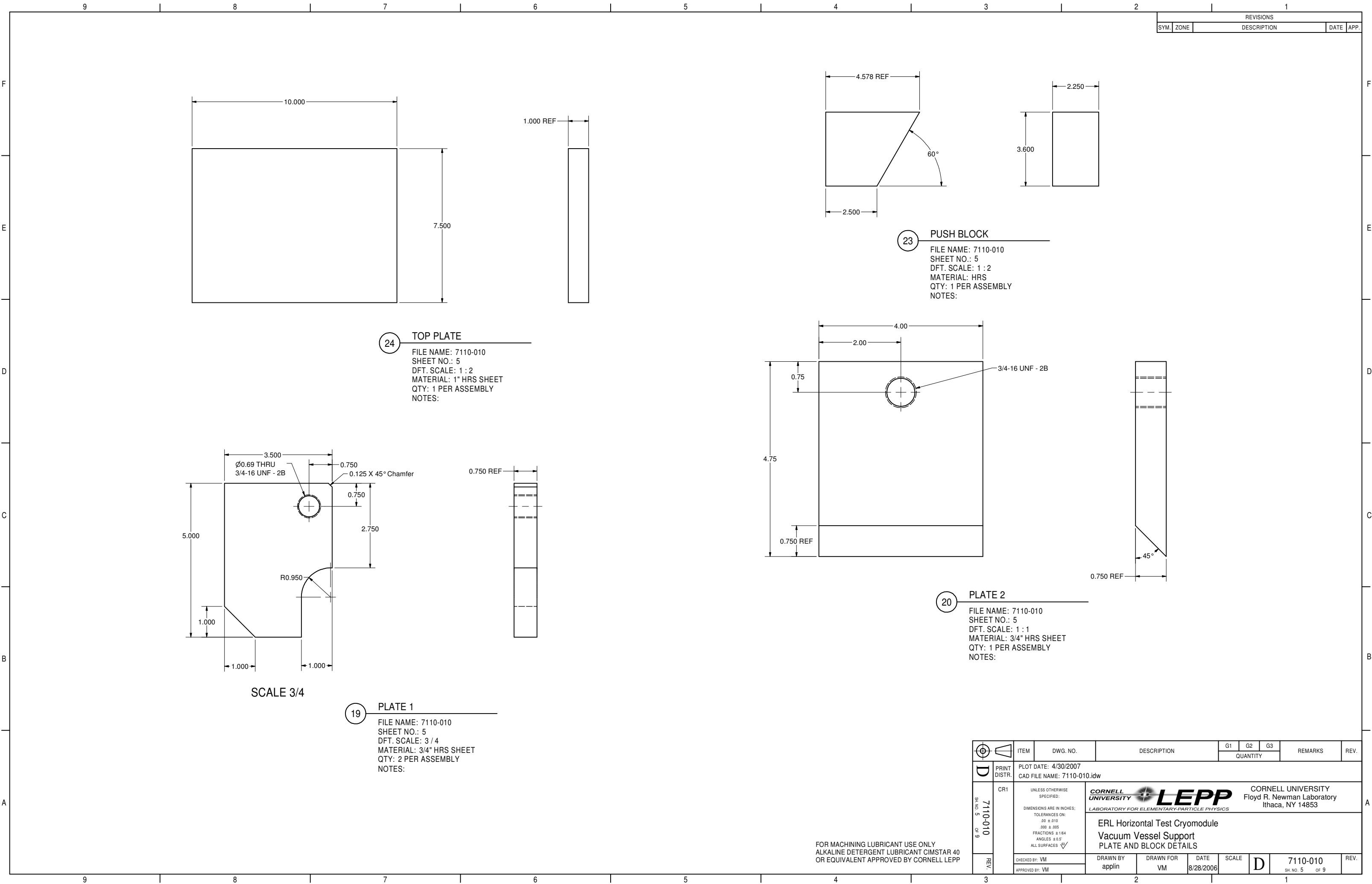
REVISIONS			
SYM.	ZONE	DESCRIPTION	DATE APP.



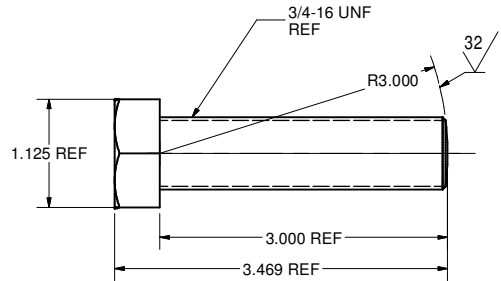
3 SUPPORT PLATE SUB-ASSY.
FILE NAME: 7110-010
SHEET NO.: 4
DFT. SCALE: 3 / 4
MATERIAL:
QTY: 1 PER ASSEMBLY
NOTES:

FOR MACHINING LUBRICANT USE ONLY
ALKALINE DETERGENT LUBRICANT CIMSTAR 40
OR EQUIVALENT APPROVED BY CORNELL LEPP

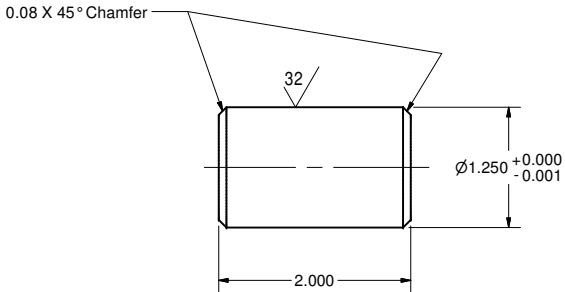
<div></div>		24	7110-010 (SH 5)	TOP PLATE	1					
		23	7110-010 (SH 5)	PUSH BLOCK	1					
		3	7110-010 (SH 4)	SUPPORT PLATE SUB-ASSY.	X					
		ITEM	DWG. NO.	DESCRIPTION	G1	G2	G3	REMARKS	REV.	
			QUANTITY							
D	PRINT DISTR.	PLOT DATE: 4/30/2007 CAD FILE NAME: 7110-010.idw								
	CR1	<div>UNLESS OTHERWISE SPECIFIED: DIMENSIONS ARE IN INCHES: TOLERANCES ON: .00 ± .010 .000 ± .005 FRACTIONS ± 1/64 ANGLES ± 0.5° ALL SURFACES </div>	<div><div><div>CORNELL UNIVERSITY</div><div>LEPP</div><div>LABORATORY FOR ELEMENTARY-PARTICLE PHYSICS</div></div><div>CORNELL UNIVERSITY Floyd R. Newman Laboratory Ithaca, NY 14853</div></div>							
	ERL Horizontal Test Cryomodule Vacuum Vessel Support SUPPORT PLATE SUB-ASSY. DETAIL									
7110-010 SH. NO. 4 OF 9		CHECKED BY: VM	DRAWN BY applin	DRAWN FOR VM	DATE 8/28/2006	SCALE	D	7110-010 SH. NO. 4 OF 9	REV.	
REV.		APPROVED BY: VM								



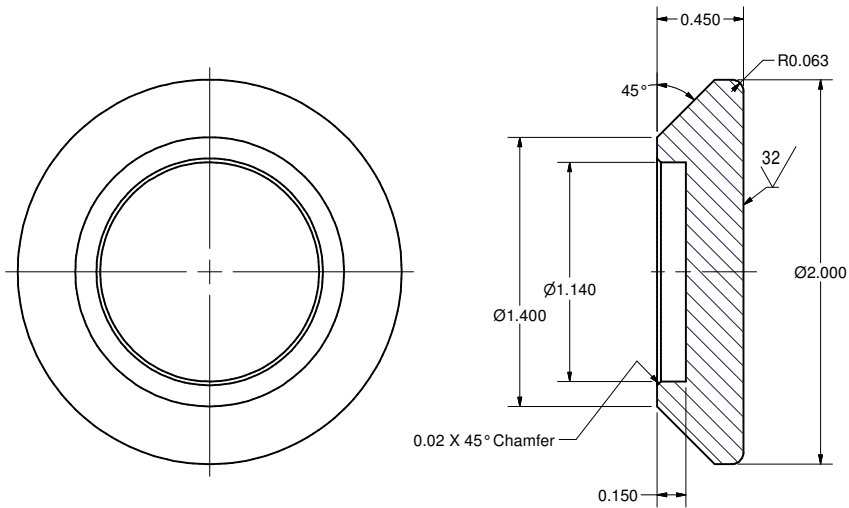
REVISIONS				
SYM.	ZONE	DESCRIPTION		DATE
A		ADDED SHEETS 7 THRU 9.	D.M.E.	2-5-07
B	E6	PART 4 WAS CALLED 1/2-20 PUSH SCREW. TMK		4/30/07



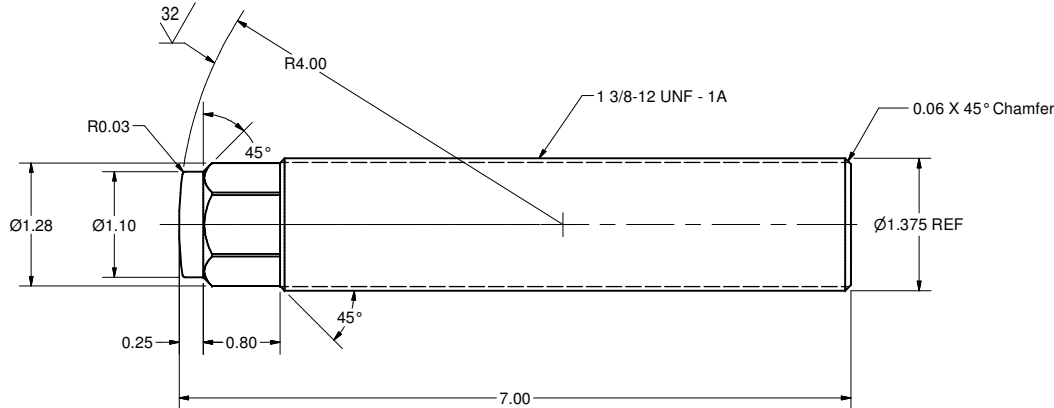
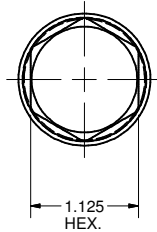
4 **3/4-16 PUSH SCREW**
FILE NAME: 7110-010
SHEET NO.: 6
DFT. SCALE: 1 : 1
MATERIAL: SEE NOTE 1
QTY: 3 PER ASSEMBLY
NOTES: 1. MAKE FROM 3/4-16 x 3 HEX HEAD CAP SCREW
MATERIAL: STEEL GRADE 8
MMC 92620A875 OR EQUIV.



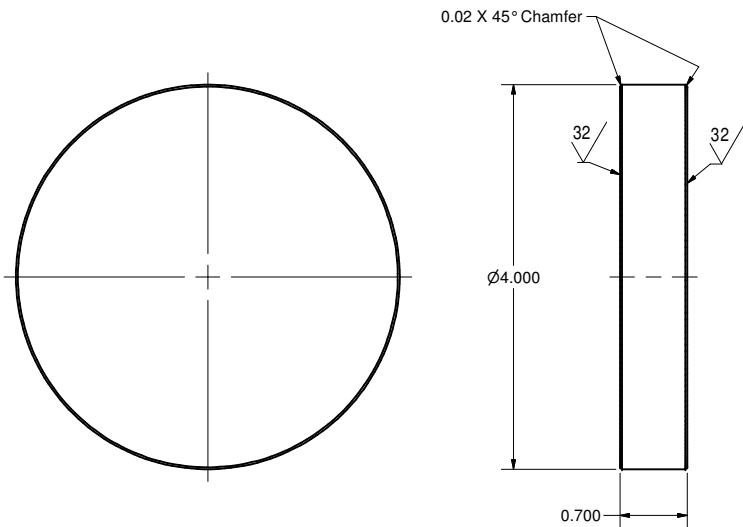
10 **PIN TOP PLATE**
FILE NAME: 7110-010
SHEET NO.: 6
DFT. SCALE: 1 : 1
MATERIAL: 304L STAINLESS STEEL
QTY: 1 PER ASSEMBLY
NOTES:



7 **PAD**
FILE NAME: 7110-010
SHEET NO.: 6
DFT. SCALE: 2 : 1
MATERIAL: BRASS
QTY: 2 PER ASSEMBLY
NOTES:

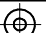



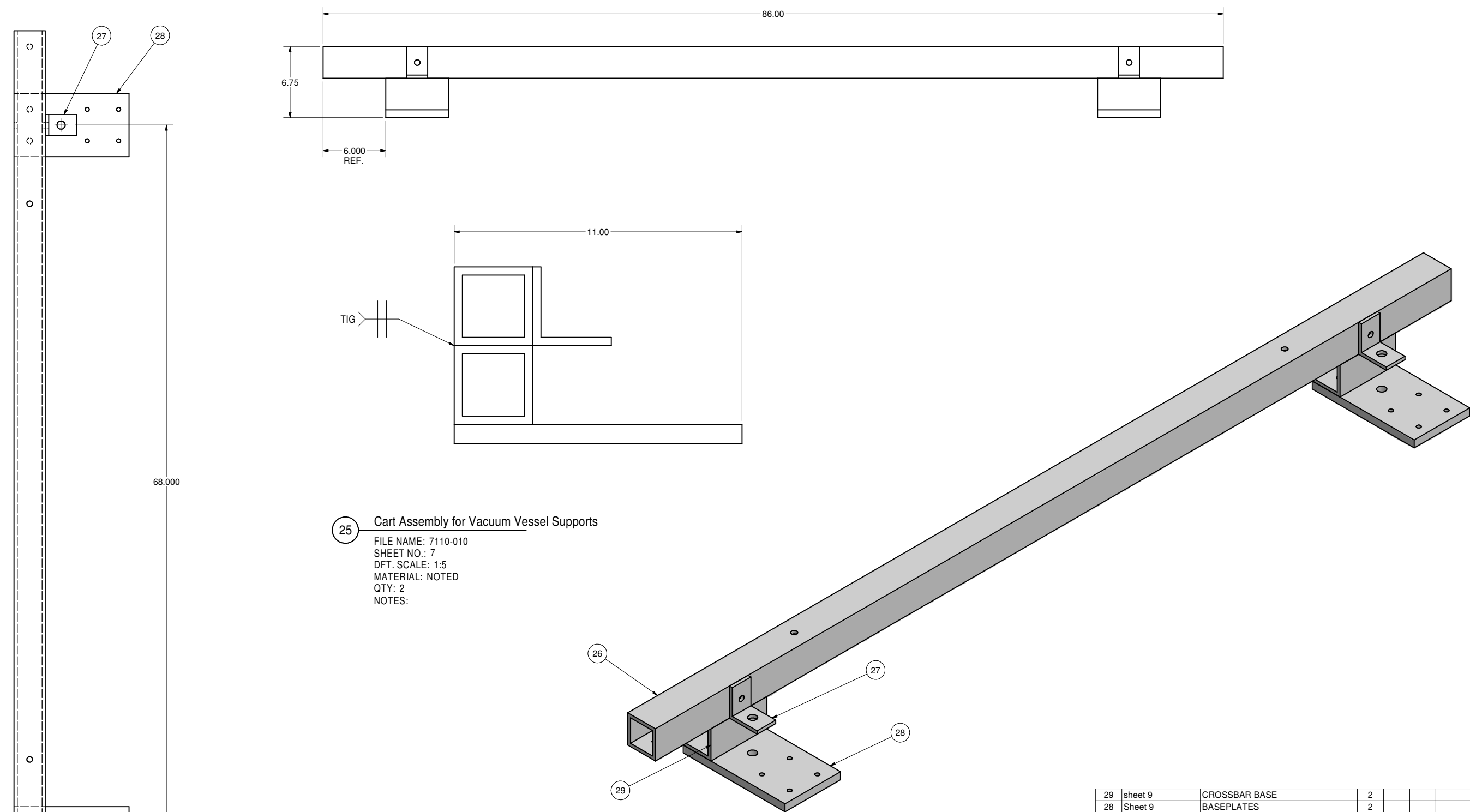
8 **VERTICAL SCREW**
FILE NAME: 7110-010
SHEET NO.: 6
DFT. SCALE: 1 : 1
MATERIAL: 304L STAINLESS STEEL
QTY: 2 PER ASSEMBLY
NOTES:



6 **TABLE PAD**
FILE NAME: 7110-010
SHEET NO.: 6
DFT. SCALE: 1 : 1
MATERIAL: 304L STAINLESS STEEL
QTY: 2 PER ASSEMBLY
NOTES:

FOR MACHINING LUBRICANT USE ONLY
ALKALINE DETERGENT LUBRICANT CIMSTAR 40
OR EQUIVALENT APPROVED BY CORNELL LEPP




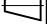



	ITEM	DWG. NO.	DESCRIPTION			G1	G2	G3	REMARKS	REV.
						QUANTITY				
D	PRINT DISTR.	PLOT DATE: 4/30/2007 CAD FILE NAME: 7110-010.idw								
		CR1	UNLESS OTHERWISE SPECIFIED: DIMENSIONS ARE IN INCHES: TOLERANCES ON: .00 ± .010 .000 ± .005 FRACTIONS ± 1/64 ANGLES ± 0.5° ALL SURFACES ✓	<div>CORNELL UNIVERSITY  LEPP</div> <div>CORNELL UNIVERSITY Floyd R. Newman Laboratory Ithaca, NY 14853</div> <div>LABORATORY FOR ELEMENTARY-PARTICLE PHYSICS</div>						
ERL Horizontal Test Cryomodule Vacuum Vessel Support PLATE AND SCREW DETAILS										
7110-010 SH. NO. 6 OF 9	REV. B			CHECKED BY: VM	DRAWN BY applin	DRAWN FOR VM	DATE 8/28/2006	SCALE	D	7110-010
		APPROVED BY: VM								



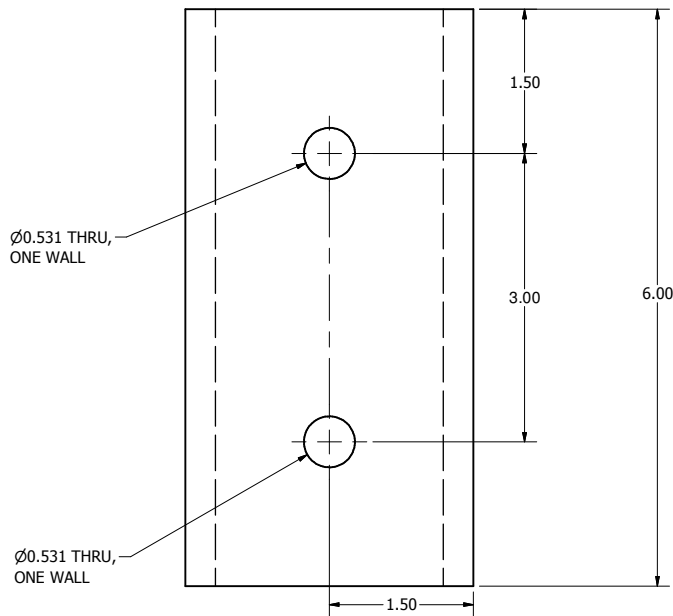
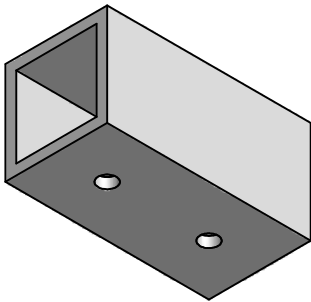
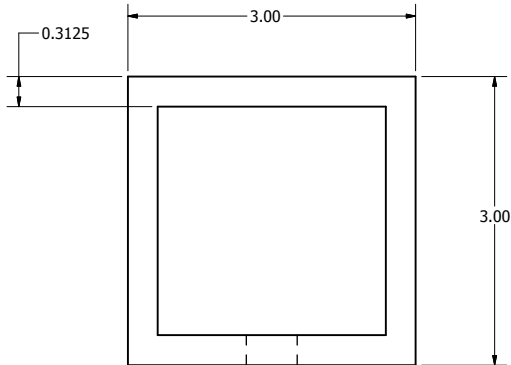
25 Cart Assembly for Vacuum Vessel Supports

FILE NAME: 7110-010
 SHEET NO.: 7
 DFT. SCALE: 1:5
 MATERIAL: NOTED
 QTY: 2
 NOTES:

29	sheet 9	CROSSBAR BASE	2				
28	Sheet 9	BASEPLATES	2				
27	Sheet 8	L-BRACKETS	2				
26	Sheet 8	CROSSBAR	1				
ITEM	DWG. NO.	DESCRIPTION	G1	G2	G3	REMARKS	REV.
			QUANTITY				

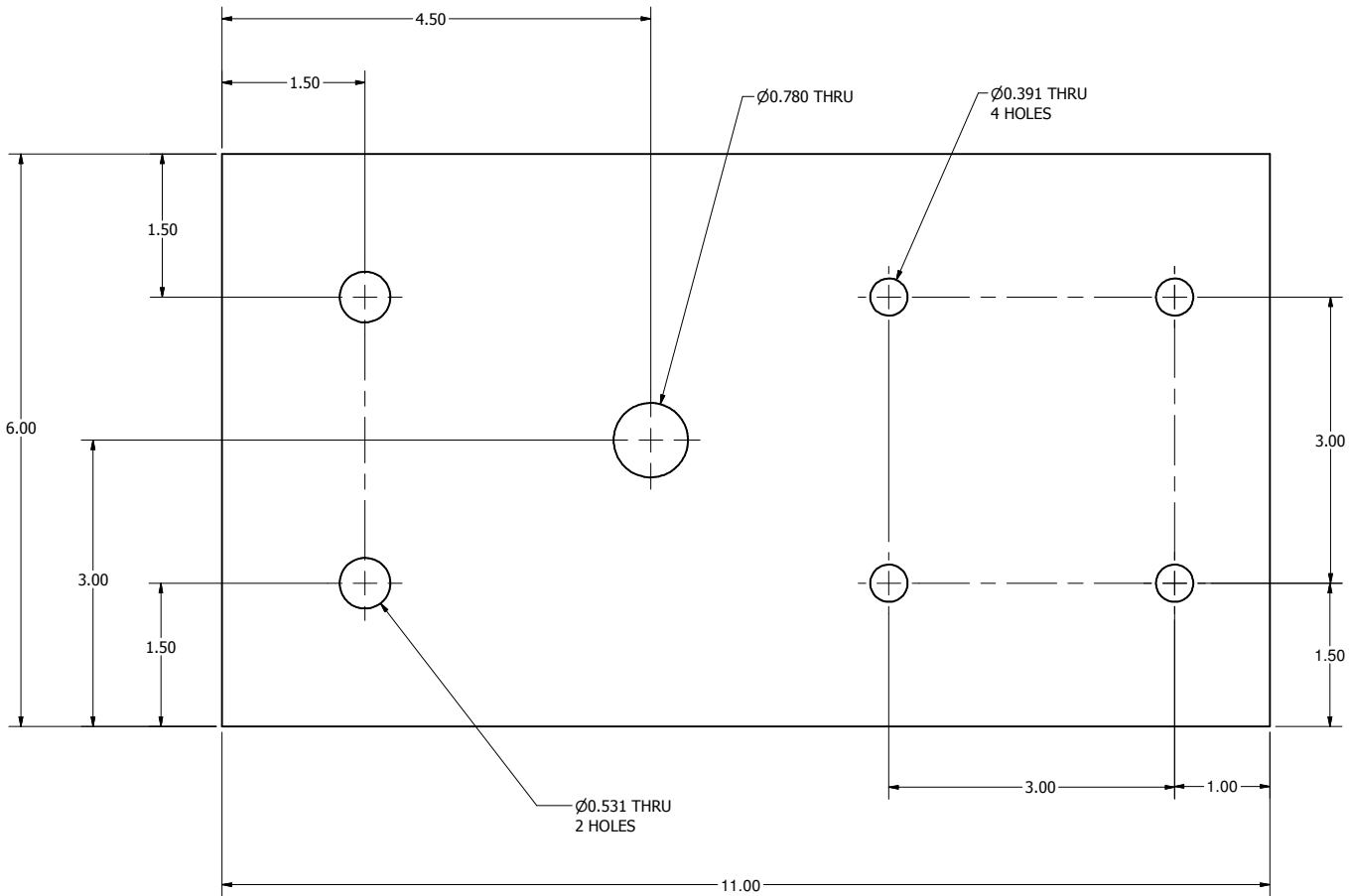
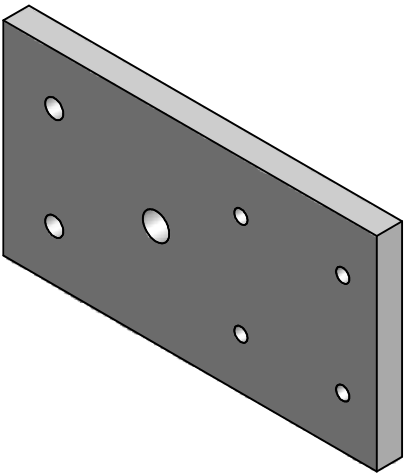
 	26	Sheet 6	CROSSBAR		T	G1	G2	G3	REMARKS	REV.
	ITEM	DWG. NO.	DESCRIPTION			QUANTITY				
 	PRINT DISTR.	PLOT DATE: 4/30/2007 CAD FILE NAME: 7110-010.idw								
SH NO. 7 OF 9 7110-010	CR1	UNLESS OTHERWISE SPECIFIED: DIMENSIONS ARE IN INCHES: TOLERANCES ON: .00 ± .010 .000 ± .005 FRACTIONS: 1/164 ANGLES ± 0.5° ALL SURFACES 			 LEPP CORNELL UNIVERSITY Floyd R. Newman Laboratory Ithaca, NY 14853 LABORATORY FOR ELEMENTARY-PARTICLE PHYSICS					
		ERL Horizontal Test Cryomodule Vacuum Vessel Support Cart Assembly								
		CHECKED BY: VM APPROVED BY: VM	DRAWN BY aplin	DRAWN FOR VM	DATE 8/28/2006	SCALE		7110-010 SH NO. 7 OF 9	REV.	

REVISIONS			
SYM.	ZONE	DESCRIPTION	DATE APP.



29 Crossbar Base

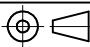





FILE NAME: 7110-010
SHEET NO.: 9
DFT. SCALE: 1:2
MATERIAL: 3 x 3 x 0.313 W A500 STEEL (or equiv.) SQ. TUBE
QTY: 4
NOTES:



28 Base Plate

FILE NAME: 7110-010
SHEET NO.: 9
DFT. SCALE: 1:2
MATERIAL: MILD STEEL
QTY: 4
NOTES:

FOR MACHINING LUBRICANT USE ONLY
ALKALINE DETERGENT LUBRICANT CIMSTAR 40
OR EQUIVALENT APPROVED BY CORNELL LEPP

		ITEM		DWG. NO.		DESCRIPTION			G1		G2		G3		REMARKS		REV.		
		PRINT		PLOT DATE: 4/30/2007															
		DISTR.		CAD FILE NAME: 7110-010.idw															
SH. NO. 9 OF 9		7110-010		CR1		UNLESS OTHERWISE SPECIFIED: DIMENSIONS ARE IN INCHES: TOLERANCES ON: .00 ± .010 .000 ± .005 FRACTIONS ± 1/64 ANGLES ± 0.5° ALL SURFACES 		<div><div> </div><div>CORNELL UNIVERSITY Floyd R. Newman Laboratory Ithaca, NY 14853</div><div>LABORATORY FOR ELEMENTARY-PARTICLE PHYSICS</div></div>										REV.	
								ERL Horizontal Test Cryomodule Vacuum Vessel Support Base Plate & Crossbar Base Details											
REV.		CHECKED BY: VM		DRAWN BY applin		DRAWN FOR VM		DATE 8/28/2006		SCALE				7110-010		REV.			
		APPROVED BY: VM		SH. NO. 9 OF 9															